







## Dartmouth Park Road, Dartmouth Park NW5

A beautifully presented three/four-bedroom family house with an architect designed kitchen and dining room extension, opening onto an attractive town garden.

Reception room • 3 bedrooms • kitchen/dining room • TV room/study/bedroom 4  
• bathroom • shower room • loft storage • off-street parking for 1 car  
• EPC Rating TBA

The two storey Arts & Crafts house is very well-located for The French Bilingual College of London; while the village like atmosphere of Swains Lane, tennis courts and acres of open space of Hampstead Heath are literally on the door stop.

Gospel Oak London Overground Station is an approximate 5 minute walk, while the nearest London Underground Station is Tufnell Park (Northern Line), less than 0.5 mile.

£1,250 per week. Unfurnished.

Telephone 020 7794 7794





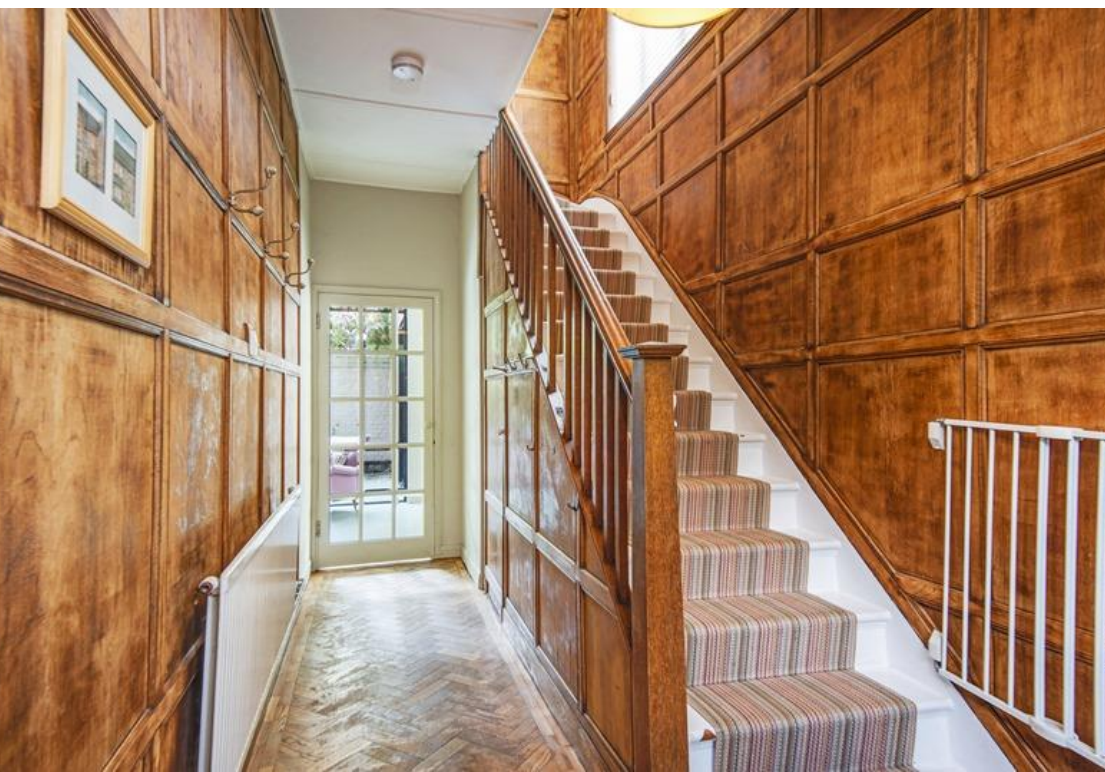




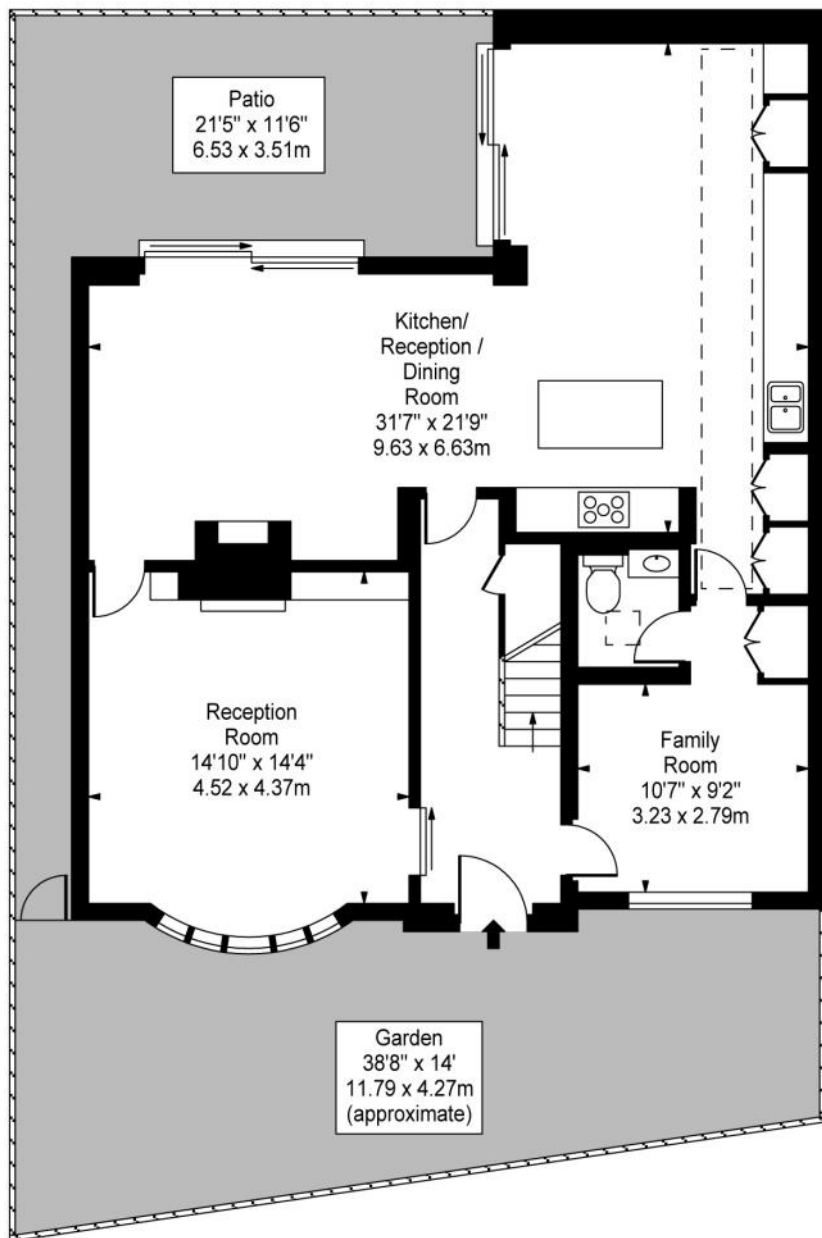
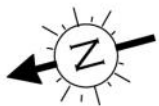




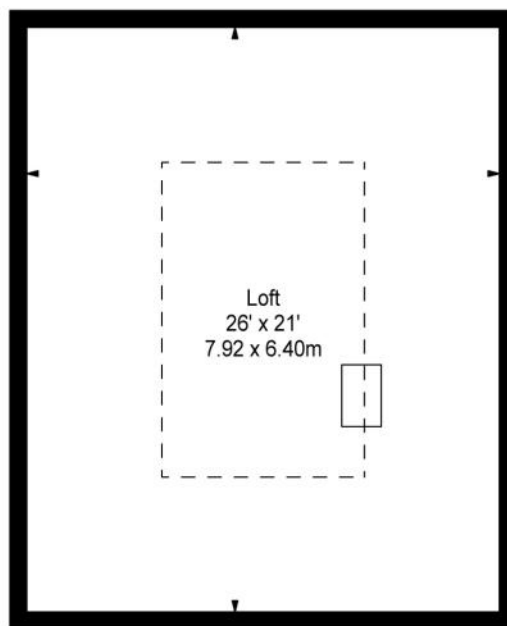




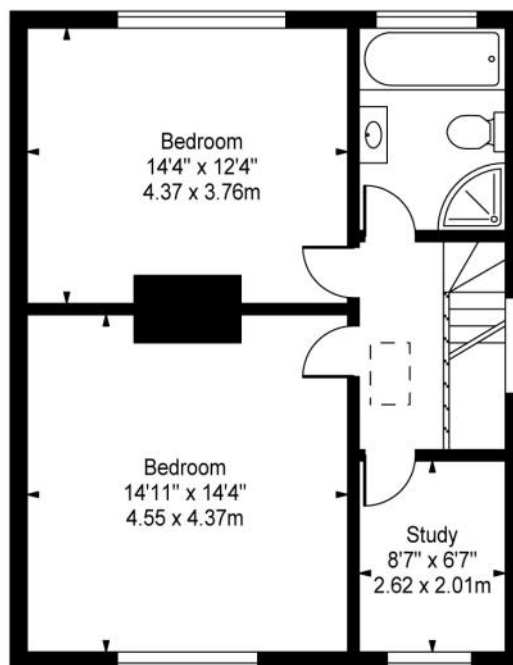




Ground Floor



Second Floor



First Floor

Approx. Gross Internal Area  
**2,170 Sq Ft - 201.59 Sq M**  
Including Restricted Heights  
**1,624 Sq Ft - 150.87 Sq M**  
Excl. Restricted Heights

**For Illustration Purposes Only - Not to Scale - by Datagraphy**  
This floor plan should be used as a general outline for guidance only.  
Any intending purchaser or lessee should satisfy themselves by  
inspection, searches, enquiries and full survey as to the correctness of  
each statement. Any areas, measurements or distances quoted are  
approximate and should not be used to value a property or be the basis  
of any sale or let.



Telephone 020 7794 7794



6 South Hill Park, London NW3 2SB | lettings@amberden.co.uk